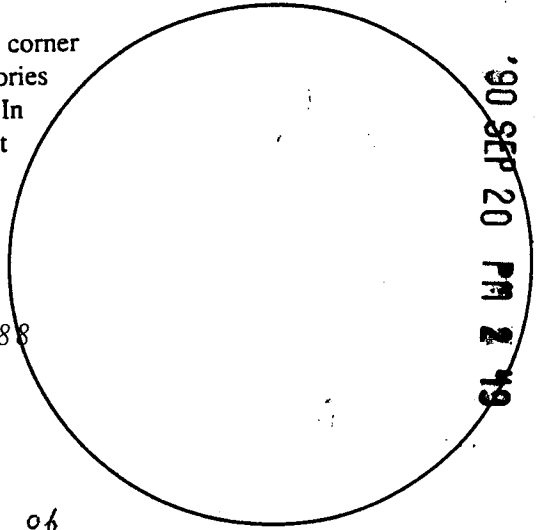


Wyoming Certified Land Corner Recordation Certificate

This form is to be completed in accordance with W.S. 36-11-101, printed in black ink or typed, and shall be for one individual corner.

Describe below, or show in sketch attached to this form, the corner evidence found. Include condition and type of monument, accessories and ties. Describe any maintenance or rehabilitation performed. In the circle to the right, show monument inscription. If monument is determined lost or obliterated, restate the GLO or BLM original field note record; describe or show the procedure used to reestablish the corner and all data as above for a found monument.



RECEIVED
LARAMIE COUNTY
CHEYENNE, WY.

075204

Field Date 03/22/89 Office Reference S02-314E0988

ORIGINAL: From this corner of Townships 13 & 14 in Ranges 66 & 67 West, I run South 89° 57' West along the South boundary of Section 36 in township 14 North, Range 67 West. 80.00 chains set a granite boulder, 17 X 10 X 8 for corner to Section 35 & 36, Township 14 North, Range 67 West.

Monument Inscription

FOUND: Granite boulder which is apparently accepted as the Southwest corner of Section 36. Its position is supported by references and ties on various subdivision plats recorded at the Laramie County Courthouse.

State of Wyoming

Office of County Clerk

County of _____

This Certified Land Corner Recordation Certificate was filed for record on the _____ day of _____, 19 ____, in Book No. T 14, R 67, on Alpha-Numeric coordinates 221 and was noted on the Cross Index Plat.

Janet C. Whitehead
County Clerk

Corner Type:

Aliquot Corner Other

Section(s) 36 Meridian 6th Principal

Corner Name Sw corner of Township 14 Range 67 Page _____

Fractional Sec. 36

Sheet 1 of 2

**Directions for using the
Cross Index Plat**

Section, quarter and sixteenth corners will be marked with a dot at the corner location. The alpha-numeric coordinate number is then determined for the intersection of the two lines. A corner that applies to two or more townships shall be filed under all that apply by the use of photo copies.

Closing corners will be indexed under the township in which they control ownership. For 1/64, 1/256, 1/1024 and non-aliquot corners lying between grid designations, mark the appropriate grid area with a dot and use the index code to the north and west (local systems may be used if the method is approved by the County Surveyor or Clerk and a written description of its use is filed in the front of each book of certificates).

Cross Index Plat

	1	2	3	4	5	6	7	8	9	10	11	12	13	14	15	16	17	18	19	20	21	22	23	24	25
A																									
B																									
C		6																							
D																									
E																									
F																									
G		7																							
H																									
J																									
K																									
L		18																							
M																									
N																									
O																									
P		19																							
Q																									
R																									
S																									
T		30																							
U																									
V																									
W																									
X		31																							
Y																									
Z																									

State Plane Coordinates (optional)

Zone W WC EC E feet/meters

NAD 1927 NGVD 1929 NAD 1983 NAVD 1988

North (Y) = 169,561.86 East (X) = 588,161.57 EL = _____

Latitude _____ Longitude _____

Scale Factor _____ Geoid Height _____

Coordinates shown hereon are State Plane - Surface coordinates based on Wyoming Highway Department control.

Certification

I, Robert W. Taylor, Wyoming PLS- #3891 certify that I, or others under my supervision, have performed the work as described above and completed this form.

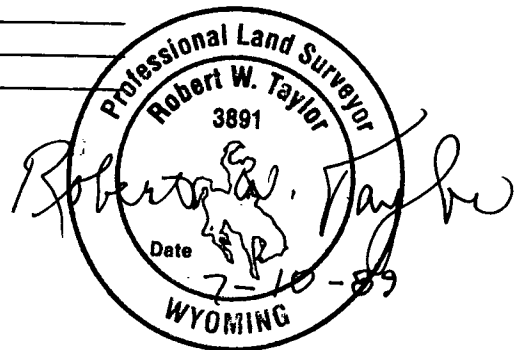
Company or Agency Eastern Wyoming Engineering & Surveying Professionals

Mailing Address P.O. Box 99

Street Address 2510 West C Street

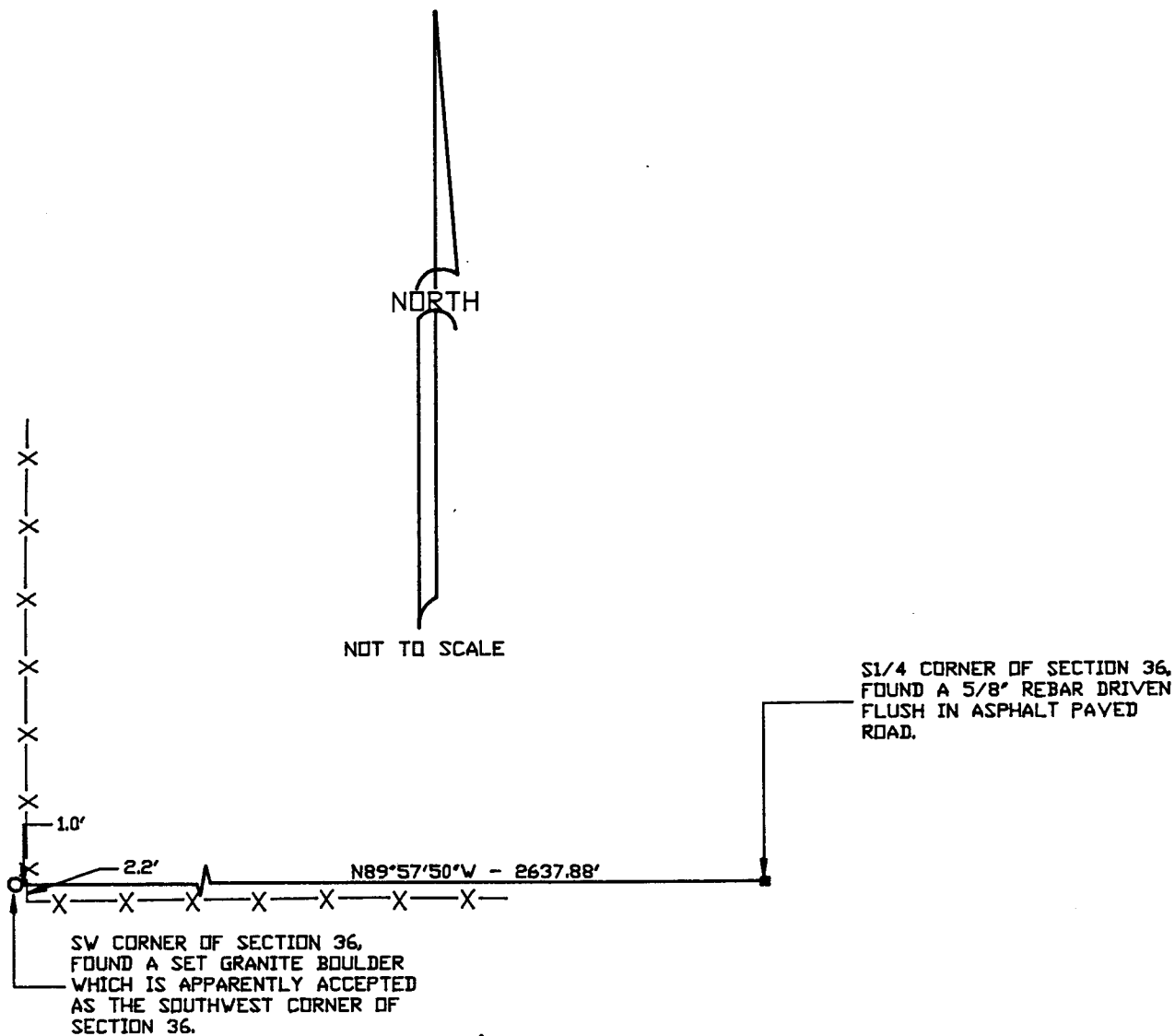
City, State, ZIP Torrington, WY 82240

Telephone, FAX 307-532-3811 FAX 532-4868



Signature, Seal, and Date

Sketch to Accompany Corner Recordation for
Southwest Corner Section 36, T14N, R67W



Sheet 2 of 2

